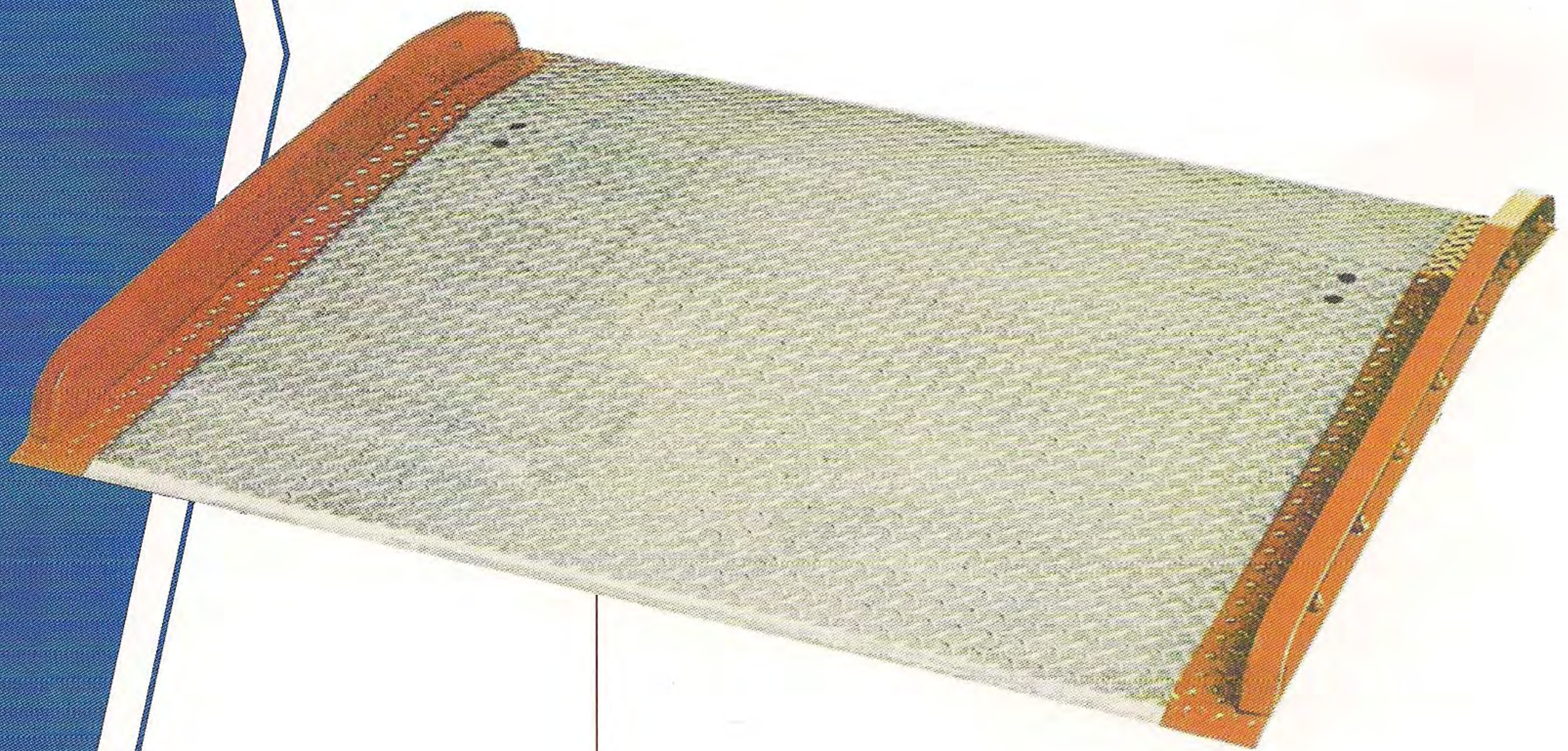




DFX DOCKPRODUCTS

- **STEEL TRUCK DOCKBOARDS and RAIL BOARDS**
- **ALUMINUM TRUCK DOCKPLATES**
- **ALUMINUM TRUCK DOCKBOARDS WITH STEEL RAILS**
- **MOBILE YARDRAMPS**



DFX
DOCKPRODUCTS

***THE ECONOMICAL WAY
TO MOVE YOUR GOODS***

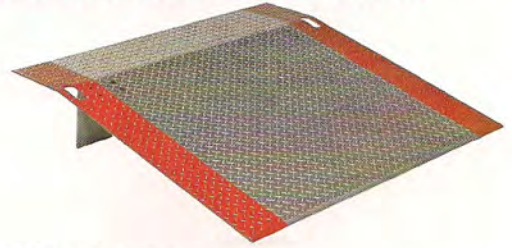
Economical, Quality DOCKBOARDS and DOCKPLATES



ALUMINUM DOCKBOARDS WITH STEEL CURBS

help prevent run offs and increases board life. Available in 60" and 72" WIDTHS. Capacities: 10,000 or 15,000 pounds.

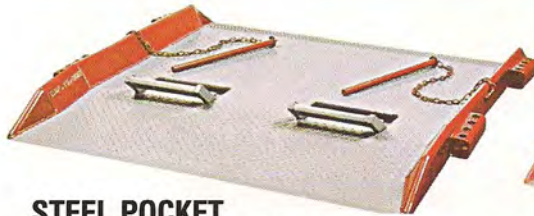
Narrow locking legs hold board in place to prevent slippage.



ECONOMICAL ALUMINUM DOCKPLATES

have steel locking legs. WIDTHS: 36, 48, 60, and 72 INCHES.

Capacity based on product size and thickness choice.



STEEL POCKET PIN BOARDS FOR SAFE, STAY-IN-PLACE USE

Steel anti-runoff curbs plus tough forklift loops. WIDTHS: 60, 72 and, 78 INCHES. 15,000 or 20,000 pound CAPACITIES available.

STEEL THRIFTY-BOARDS WITH 2 HANDLES



Easy handling with strong side rails to prevent runoffs. Available in 30 and 36 INCH lengths in 60" width. Capacity: 10,000 pounds.



DURABLE STEEL DOCKBOARD WITH STEEL CURBS

Complete with lifting chains. Capacity: 10,000 pounds 60" WIDTH in LENGTHS of 36" to 60" in 6" steps.



Lift loops have 11" openings for easy forklift positioning.

HEAVY DUTY STEEL TRUCK DOCKBOARDS WITH LIFT LOOPS OR LIFTING CHAIN

Heavy steel treadplate welded to contour safety curbs for unitized strength. Use with Even or Higher than dock levels. Choice of 60", 72", or 78" WIDTHS in 15,000 or 20,000 pound capacities.



Rugged lift chains for faster positioning by forklift.

STEEL PIN DOCKBOARD SOLVES ODD-ANGLE TRAILER PARKING PROBLEM

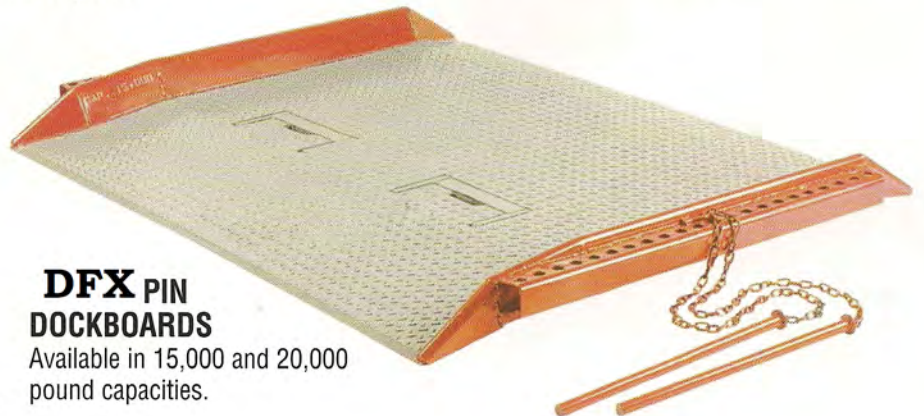
Trailers parked at odd angles against your dock won't slow down freight handling, if our Pin Dockboard is used. After positioning, drop pins into pocket

holes on each side of dockboard to hold it safely in position ready for use. Safety design features include welded contour curbs to prevent

runoffs, treadplate with 2 correct degree bends to prevent kick-ups and to allow ample bottom clearance for forklifts.



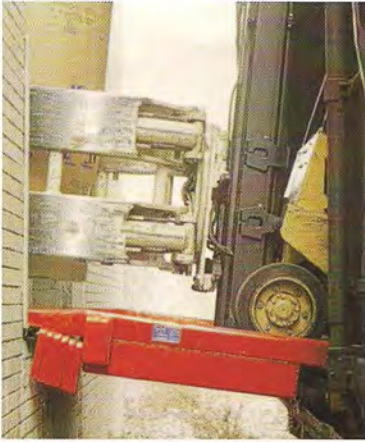
Safe odd-angle parking is possible with our Pin Dockboard's Sure-Lock pin locking system.



DFX PIN DOCKBOARDS

Available in 15,000 and 20,000 pound capacities.

Steel Rail Dockboards for Safer Freight Transfers Off Railway Box Cars



Specially fitted forklift handles heavy paper rolls over a **DFX** Rail Dockboard.

ALSO FOR REFRIGERATED AND SPECIAL BOX CARS

Position the Rail Dockboard and the automatic locking rings drop down against the dock to hold it securely in place. Extra strong dockboard understructure has bumpers to fit around railcar latches to reduce rocking and shifting from forklift use. Choice of lift loops or chains for easy positioning. All Rail Dockboards are made to your specifications and are available in 70 to 230 inch WIDTHS. Capacities: 15,000 to 60,000 pounds.



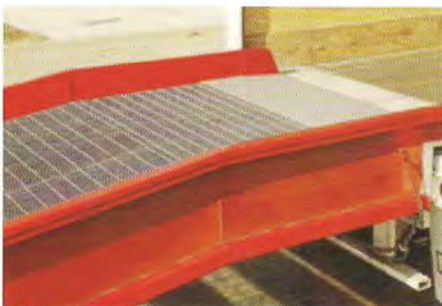
Understructure is placed against railcar edge while locking rings drop down to hold Dockboard safely in position.

Edge of Dockleveler



- Capacities from 20,000 to 25,000 pounds
- Automatically returns to stored position when truck leaves
- Self-storing handle
- Bumper and bumper blocks are included

Fast and easy to operate, **DFX's** edge of dockleveler is positioned by lifting a self-storing handle and pulling the handle to the dock floor. the latch assembly activates the lip forward to the floor of the trailer as the handle is lifted. When released, the handle automatically returns to a stored position. The optimum dock height for conventional trailers is 51". while the proper height for refrigerated equipment is 55". Refrigerated lip is optional. Widths of 72" and 78" are available



6 ft. Level Off allows safer forklift use to reach end loads in trailer. 15" treadplate extends into trailer or over dock edge. Standard SAFETY CHAINS hold Yardramp safely in position

Steel Yardramp Facilitates Freight Handling Moves Easily to Any Dock, Trailer or Railcar Location

DFX Yardramps are portable, which means they can be rolled anywhere in your yard where you need fast freight handling. Off the dock or a trailer standing in your yard, because all dock doors are busy or a full railcar are good examples of bottlenecks. Yardramp can eliminate and help your dock operation run smoother.

Top grade steel and assembly make the **DFX** Ramp one you can rely on for years of dependable service.

Features include:

- Self-cleaning Grating
- Hydraulic leveling system
- 6 ft. Level Off – 36 ft. models
- 30 ft. models without Level Off
- 18 in. tires
- Options – Towing Bar and Ramp Loop for forklift positioning.



Undercarriage assembly made of heavy-gauge, tubular box steel.

Capacities: 16,000, 20,000, 25,000, or 30,000 pounds.



18" solid rubber pneumatic profile tires have wide tread to make repositioning by forklift easy.



Ramp-Loop helps forklift operators move the Yardramp to different short distance locations. For longer moves our Towing Bar is recommended.

**Use this
DFX DOCKPRODUCTS Guide
to choose the SIZE and CAPACITY that
fits the capability of your Equipment**

CHOOSING THE CORRECT DOCKBOARD LENGTH

will depend upon whether a Pallet Truck or a Forklift is used. The type of forklift, electric, gas, or propane should also be considered. Each loading machine has a different maximum grade it can handle without damage. The LENGTH choice must be long enough for the poorest gradability. Averages should not be used, as this can damage all equipment.

MAXIMUM TRAILER HEIGHT SERVED

Freight Line Trailers	46" – 56"
Flatbed Trailers	50" – 60"+
Bob Tail Trucks	46" – 48"
Containers	56" – 62"
Reefer Trailers	50" – 60"

Maximum Trailer Height - Dock Height = Height Up

Trailers LOWER than dock level should be elevated with WHEEL RISERS. Slopes and dips below the dock will affect the correct board length. Consult with your **DFX DOCKPRODUCTS** Dealer for assistance.

Using this chart, you can determine the length of dockboard needed to work with the LOWEST gradability of your equipment.

** Pallet Trucks & Electric Forklifts 14% Grade		Gas & Propane Forklifts 19% Grade	
Height Up	Minimum Lgth.*	Height Up	Minimum Lgth.*
3"	36"	5"	36"
5"	48"	7"	48"
7"	60"	9"	60"
8"	66"	10"	66"
8 1/2"	72"	11"	72"
9"	78"	12"	78"
10"	84"	13"	84"
11"	90"	15"	96"

CHECK YOUR FORKLIFT CAPACITY TO FIT THE DOCKBOARD CAPACITY

4-Wheel Forklift Capacity	Dockboard Capacity*	3-Wheel Forklift Capacity	Dockboard Capacity*
2-3,000	10,000	2-2,500	10,000
To 5,000	15,000	3-3,500	15,000
To 6,500	20,000	4-5,000	20,000
7-8,000	25,000		

* Capacities and lengths not available on all product models.
 ** LIMITATION NOTES...
 Some Electric forklifts have limited gradability. Manufacturer can furnish capabilities.
 Stackers and other narrow aisle loaders with low under-clearance should not be used on a Dockboard.
 Pallet Trucks with 72" or longer forks require longer LENGTH Dockboards than those listed above.

CHOOSING THE CORRECT DOCKBOARD WIDTH

improves loading efficiency. A wider Dockboard prevents repositioning to reach end loads. Both ALUMINUM and STEEL Dockboards in 60" widths work best. PIN Steel Boards should be at least 70" wide. Pallet Trucks using a DOCKPLATE require a 48" width for best results. When using 4-wheel forklifts with over 5,000 lb. capacity, a 70" minimum width is recommended. RAIL Boards require a dealer furnished Rail Board Worksheet completed by the customer.

Your **DFX Dockproducts** Dealer:

